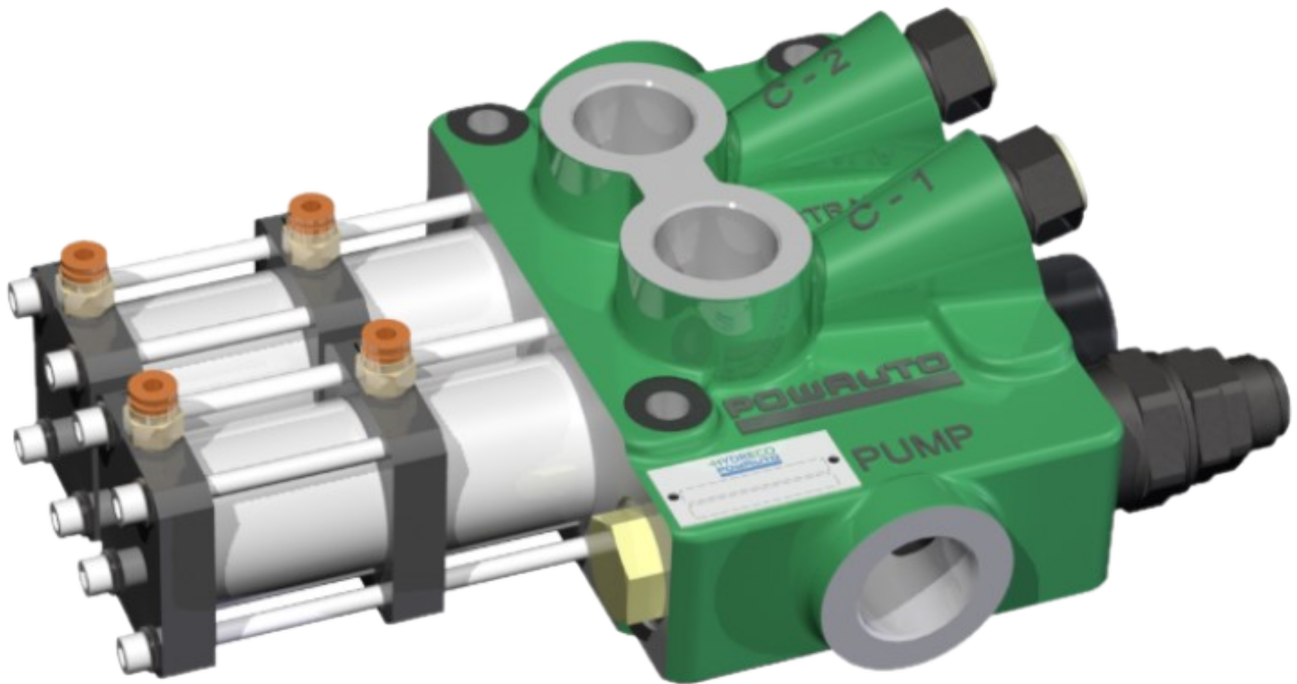


Technical Data Sheet



210 SERIES TRUCK & TRAILER VALVES

Truck & Trailer Valves

The 210 Valve has been designed in response to the changing needs of the modern truck market.

These valves provide another option for truck and trailer applications where dual tipping or compact size is required in conjunction with high flow rates.

When used with a dual hoist control (CK108, CK158, CK167 or CK179) these valves provide a compact solution relative to the alternatives.

Suits:

Truck and trailer applications.

Options:

Service port pressure switches.

Product Features

- **Hard Chrome Metering Spools**
Combine with the load hold check valve to provide load independent, proportional control.
- **Monoblock Construction**
For maximum strength and integrity, allowing for repeatability and long life.
- **Air Operated**
For ease of engagement remotely via pneumatic or electro pneumatic control.
- **Larger Gap Between Cylinder Ports**
Ease of hose fitting provides quicker fit up.
- **Extra Large Galleries and Spools**
To allow for larger flow capacities with extremely low pressure drops.
- **High Flow Rates**
Lowest pressure drop compared to competitors at high flows. Allows for more cycles per day.

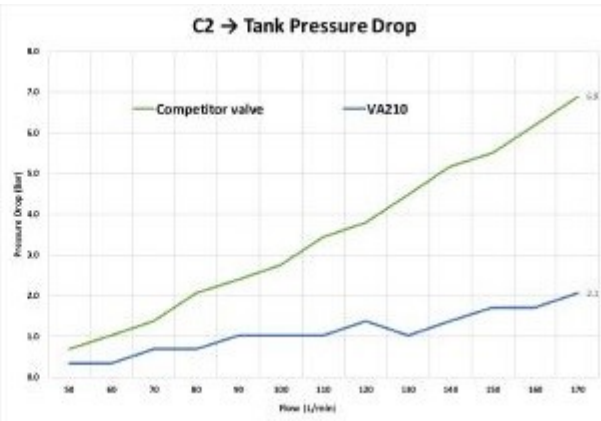
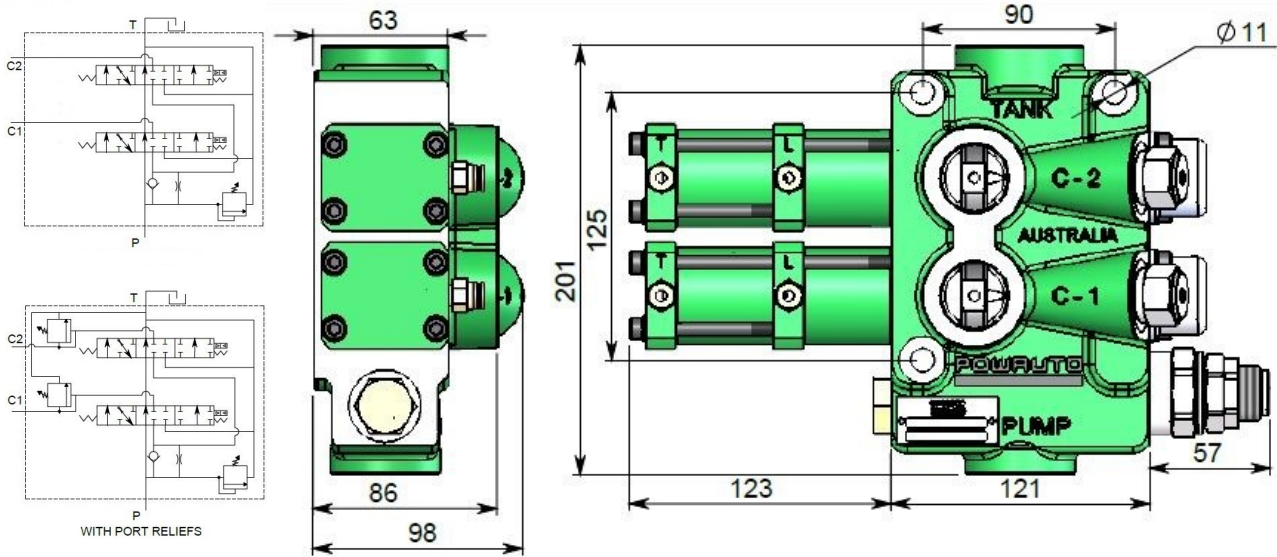


HYDRECO
a member of **DAIKIN** group



www.hydreco.com

Technical Data Sheet



VALVE DESIGNATION CODES

210 series valve VA 210 A 1221 A

Identifier ← VA = Valve

Valve Series ← 210

Engagement Type ← A = Air

Relief Pressure Range (Bar) ← 1221 = 120 - 210 (1700 - 3000psi)
1234 = 120 - 345 (1700 - 5000psi)

Features ←

- A = Std + Service Port Switches
- B = Std (Metering Spool Only)
- C = Std + Service Port Switches + Two Speed Lower
- D = Std + Two Speed Lower
- E = Std + Port Relief
- F = Std + Port Relief + Two Speed Lower
- G = Std + Two Pressure Relief Valve
- H = Std + Service Port Switch + Two Pressure Relief Valve

Technical Specifications		VA210A1221B
Number of Spools		2
Action		Single Acting
Maximum Pressure	Bar / psi	345 / 5000
Pressure Drop @ 170LPM C1-T	Bar / psi	3.4 / 49.3
Pressure Drop @ 170LPM C2-T	Bar / psi	2.1 / 30.5
Base Valve Mass	kg	11
Port Sizes - PUMP & CYL		1" BSPP
Port Size - TANK		1/4" BSPP
Pressure Switch (Optional)		49700051B
Seal Kit (does not include 43000112G piston)		SK120
Seal Kit (includes 43000112G piston)		SK120B

Note: Hydreco recommends the use of filtration in all hydraulic circuits to a maximum of 25µm.

Doc: VA210—07/23



HYDRECO
a member of **DAIKIN** group



www.hydreco.com